

***HD - HWD  
VACUUM CLEANERS  
RANGE***

made by

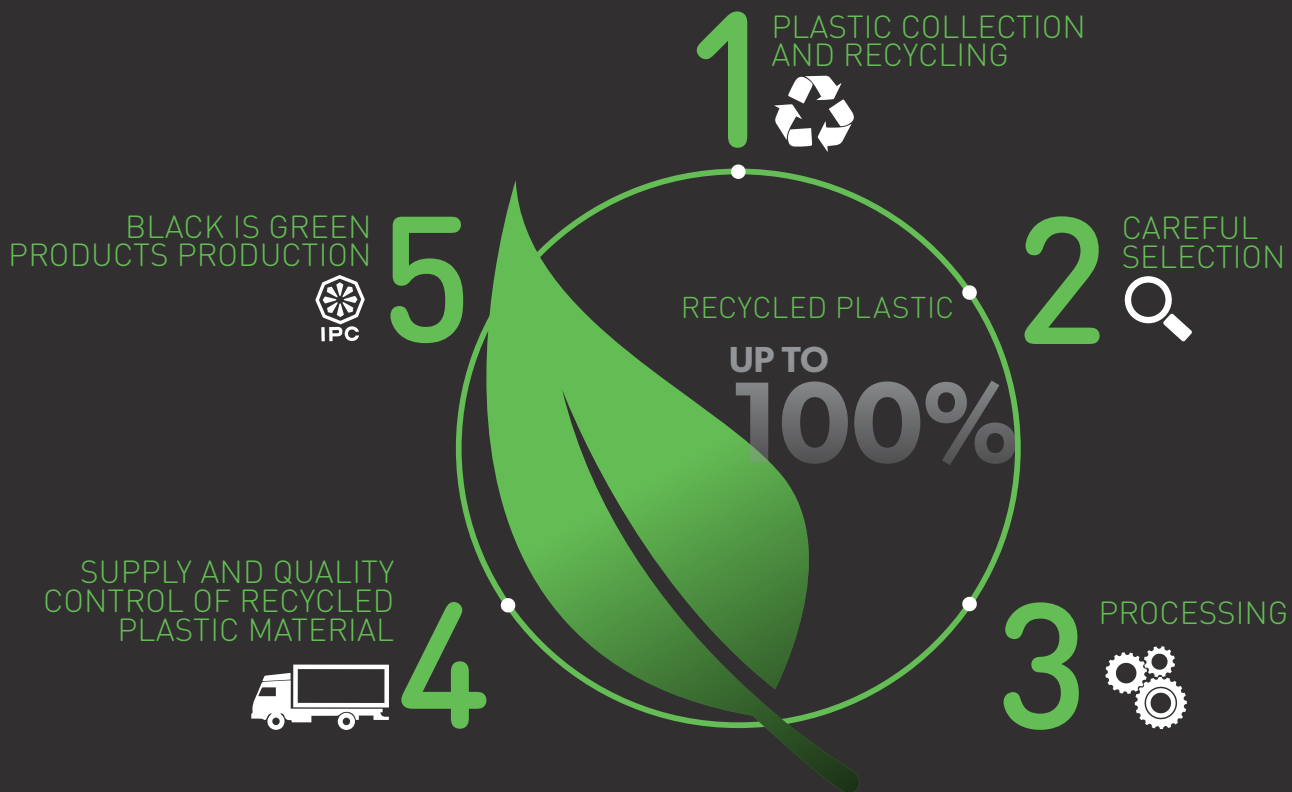
**SOTECO™**





## UP TO 100% RECYCLED PLASTIC

Our designers have developed an innovative and fully equipped product range ideal for professional cleaning. The certification of recycled plastic content in our products is a consistent consequence of transparent documentation and high control of supply chain, processing and production of our products. Through the IPC exclusive black is green technology, these new eco-friendly products have been created with high quality recycled plastic, promoting sustainable development and environmental protection.



### HOW TO KNOW THE CONTENT OF RECYCLED PLASTIC

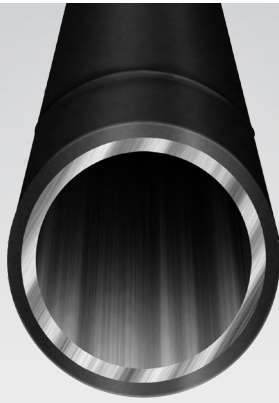
The percentage of recycled plastic can vary from product to product or according to its configuration. The recycled plastic content in Black is Green IPC products can vary from a minimum of 15% to a maximum of 100%. It is possible to request documentation on the recycled plastic content indicating the specific product of interest.

### BENEFITS

- 01** Black is Green™ recycled plastic is a raw material made of the best and strictly selected plastic waste. Black is Green™ is the result of an innovative process which guarantees the features of the brand new and high quality plastic, in the total respect of the environment
- 02** Recycled plastic produces no waste, it is recyclable and in compliance with RoHS and REACH guidelines
- 03** The minimum content of recycled plastic in the products and the production process of the "Black is Green" plastic are certified by a third party, in compliance with international regulations
- 04** The use of recycled plastic content in cleaning products is recognized in public tenders as a rewarding green requirement



AP TUBE  
ALUMINIUM  
/ PLASTIC  
TUBE



### LIGHT AND TOUGH

The AP Tube is an innovative solution to simplify the daily cleaning activities. The AP Tube is lightweight and at the same time extremely robust, consisting of an inner layer of aluminum covered with a recycled plastic layer.

AP Tube is wear-resistant (Rust-proof), ergonomic and it ensures maximum maneuverability.

#### BENEFITS

01

Mix of plastic and aluminium

02

PLUS OF ALUMINIUM:

- Lightweight
- Mechanical resistance
- Air friction reduced

03

PLUS OF PLASTIC:

- Anti slip
- Thermal protection
- Corrosion proof

04

Easy removable when turning the two wands, but strong connected if pulled



SANIFILTER



### CERTIFIED ANTIBACTERIAL TREATMENT

The antibacterial treatment of the filters with silver ions (Ag+ ions) destroys bacteria's membrane cell, fungus, viruses, microparasites and inhibits their proliferation.

#### BENEFITS

01

Good cleaning resistance, up to 5 washes at low temperature (T=40°C)

02

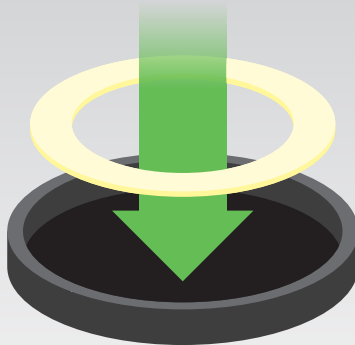
Immediate and effective action on the collected material avoiding bacteria re-emission in the exhaust air

03

Antibacterial activity against both Staphylococcus Aureus and Klebsiella Pneumoniaes verified according to the JIS L 1902:2008 International Standard



EXCLUSIVE  
BUILT-IN  
SEALED  
GASKET



### MAXIMUM SEAL

The innovative head gasket is melted in the base through a special process that guarantees maximum resistance and durability even when vacuuming oily or chemical residues.

Steel tank models include an integrated metal plate to avoid electrostatic discharges.

#### BENEFITS

01

Extremely durable also to chemicals

02

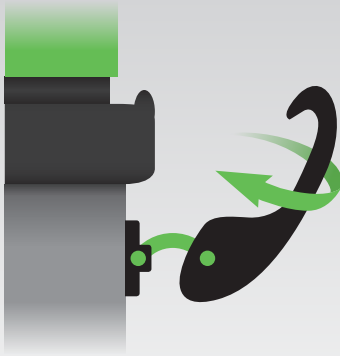
Maximum seal: no loss of airflow during suction

03

Easy maintenance: easy to clean and wear-resistant.



HI-TECH  
HOOKS



### EXTREMELY FLEXIBLE

Unbreakable hooks are extremely flexible and resistant to any type of torsion thanks to a special blend.

#### BENEFITS

01

Twist-proof

02

Shock resistant

03

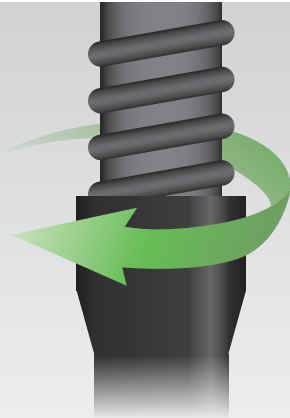
Super flexible

04

Fast latching



SCREWING  
CONNECTION



### HOSE ALWAYS FASTENED

The screwing connection of the flexible hose to the wand allows to work in maximum safety, avoiding damages and preventing the uncoupling of the hose.

#### BENEFITS

01

Great maneuverability

02

Maximum safety during cleaning





ECODESIGN  
FOR  
PROFESSIONALS

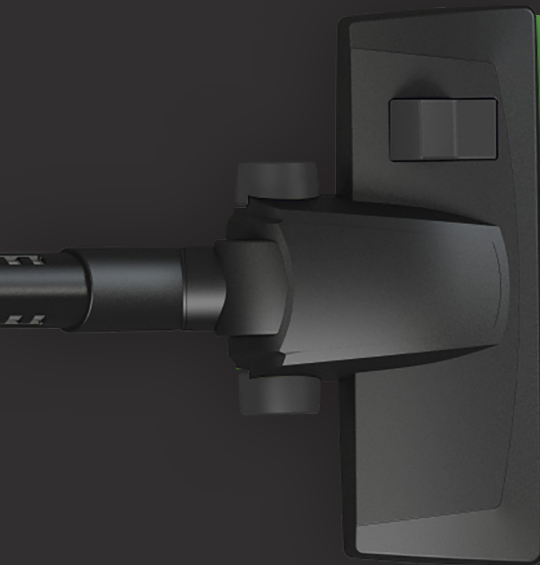


---

## BEST PERFORMANCE WITH LESS ENERGY CONSUMPTIONS

The new only dry vacuum cleaners have been designed for cleaning specialists and contract cleaners by ensuring high productivity and cost savings.

FOR MORE



EFFICIENCY  
PERFORMANCE  
FILTRATION  
SILENT

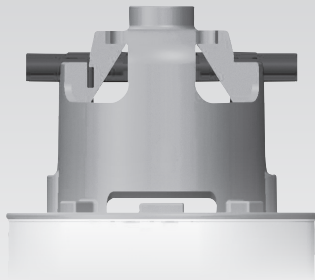
---

### BENEFITS

- 01 Best performances with maximum energy saving
- 02 Powerful and combinable nozzle for an high cleaning efficacy with less sliding friction force
- 03 High Efficiency filtration system and low noise level
- 04 Long-lasting motors and oscillation-resistant flexible hoses (up to more than 40.000 oscillations)



**NEW  
ECO-MOTOR™**



### BEST PERFORMANCE WITH MAXIMUM ENERGY SAVING

A new generation motor which ensures maximum energy-saving, providing best performance, reliability and great efficiency.

#### BENEFITS

01

Energy consumption less than 32 kWh/year

02

Advanced mechanical design ensuring no loss in performance

03

Durability up to 800 hours

04

Silent



**NEW  
ECO-BRUSH™**



### POWERFUL COMBI NOZZLE FOR HIGHLY CLEANING EFFICACY

Powerful nozzles for high cleaning efficacy, properly designed to reduce energy consumption and ensure minimum user effort.

#### BENEFITS

01

New ABS base plate for maximum suction efficiency on carpets and hard floor surfaces with low noise level

02

Anti trace wheels designed to improve the sliding of floor nozzle

03

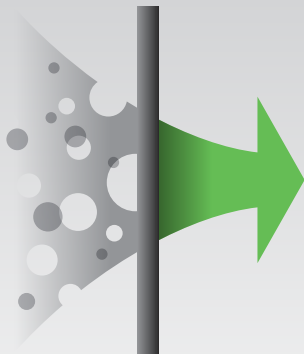
Optimization of extraction pipe and retractable bristles

04

Robust structure for heavy duty employments



**NEW  
ECO-BAG™**



### HIGH EFFICIENCY FILTRATION

High Efficiency Filtration and containment (class M certified).

#### BENEFITS

01

Great resistance to rips and ruptures

02

Safe containment of fine dust to avoid inhalation during disposal

03

Reduction of dust re-emissions in exhausting air





### SPEED&NOISE REGULATOR



### NOISE REDUCTION

"Speed variator" function allows user to reduce noise level during usage in areas where silence is a must. The high efficiency of our system guarantees a good performance maintenance and avoids work interruption.

#### BENEFITS

01

Allows motor rpm (noise level) adjustment, when necessary

02

Easy to use: just turn the control knob to adjust noise level



### NEW ERGONOMIC SOLUTIONS



### MAKE THE WORK COMFORTABLE

Through an accurate field-based research of both professionals and users, we developed a number of suitable solutions to improve comfort and ergonomics of our new generation of "dry only" models.

#### BENEFITS

01

Integrated housing for cable wrapping

02

New handle with parking position for extension tube

03

Easy filter replacement without tools

04

New bumpers to prevent damages or latches disconnection



### FULL FILTER INDICATOR



### WARNING LIGHT FOR FILTER REPLACEMENT

A warning light connected to an integrated sensor alerts the user if there is a clogging issue or if filter is full. This prevents motor and filters damages and reduces dust re-emissions.

#### BENEFITS

01

When the light is on, check the filter. If it is full/clogged, you should replace/wash it.

# HO.RE.CA.



## DAILY CLEANING

- ▶ HOTEL BEDROOMS
- ▶ HALL
- ▶ DINING ROOMS

## REGULAR CLEANING

- ▶ CORRIDORS
- ▶ ELEVATORS
- ▶ STAIRS

# RETAIL



## DAILY CLEANING

- ▶ SHOP WINDOWS & CHANGING ROOMS
- ▶ CLASSROOMS, WAITING ROOMS, SNACK AREAS
- ▶ OFFICES AND MEETING ROOMS

## REGULAR CLEANING

- ▶ CORRIDORS
- ▶ STAIRS
- ▶ ELEVATORS

# HARDWARE & LOGISTICS



---

## GENERAL MAINTENANCE

- ▶ FILTERS AND AIR-CONDITIONING SYSTEMS
- ▶ WAREHOUSES AND LOGISTICAL AREAS
- ▶ AIRCRAFTS, TRAINS AND BUSES

## REGULAR CLEANING

- ▶ GARAGES
- ▶ TRUCK CARGO BEDS
- ▶ WORKING AREAS AND TECHNICAL ROOMS

# OFFICES



---

## DAILY CLEANING

- ▶ SHOP WINDOWS & CHANGING ROOMS
- ▶ CLASSROOMS, WAITING ROOMS, SNACK AREAS
- ▶ OFFICES AND MEETING ROOMS

## REGULAR CLEANING

- ▶ CORRIDORS
- ▶ STAIRS
- ▶ ELEVATORS

# HD 1/12

POWER MAX

900  
W

WATER LIFT

2260  
mmH<sub>2</sub>O

AIRFLOW

158  
m<sup>3</sup>/h

TANK CAPACITY

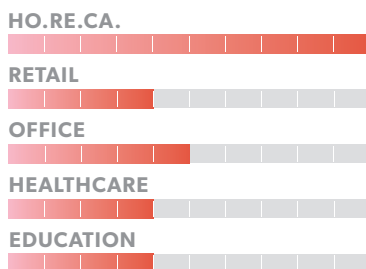
12  
l



## EXCLUSIVE FEATURES

- ▶ STRONG HOOKS
- ▶ SCREWING CONNECTION
- ▶ ECOMOTOR
- ▶ ECOBRUSH
- ▶ DETACHABLE CABLE
- ▶ BAG FILTER INCLUDED

## MOST FREQUENTLY USE



## INNOVATIONS



## SPECS



SIDE PROTECTION AGAINST DOOR AND WALLS



PAPER CARTRIDGE IN UPSTREAM



DETACHABLE CABLE

## TECHNICAL DATA

		<b>HD 1/12</b>
Code		ASD014075
PERFORMANCE		
Usage		DRY
Motor		1
Power	W	840-900 max
Voltage	V	220-240
Water lift	mmHzO	2260
Airflow	m <sup>3</sup> /h	158
Tank Capacity/Material	l	12 / plastic
Cable length	m	12.5
Sound Pressure Level (EN 60704-1; EN 60704-2-1; IEC 60335-2-69)	dB(A)	63
Sound Pressure Level (EN 60704-1; EN 60704-2-1; Reg. 665/2013, 666/2013)	dB(A)	79
Diameter of accessories	mm	36
Dimensions (LxWxH)	mm	400x400x330
Weight	kg	5.8

## STANDARD EQUIPMENT: HD 1/12

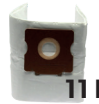
CODE: FTDP40011  
PAPER CARTRIDGE  
UPSTREAM



CODE: FTDP40009  
FOAM FILTER  
DOWNSTREAM



CODE:  
PAPER BAG 11 I



CODE: TBFX00970  
FLEXIBLE HOSE 2 m  
Ø36 mm



CODE: LAFN85073  
HANDLE WITH AIR  
REGULATOR Ø36 mm



CODE: LAFN28238 (FOR 1 PC)  
ALUMINIUM/PLASTIC  
TUBE 50 cm Ø36 mm  
(MACHINE COMES WITH 2PCS)



CODE: SPPV01990  
DOUBLE USE BRUSH ECO  
Ø36 mm



CODE: SPPV28242  
FLAT LANCE  
Ø36 mm



CODE: SPPV28243  
ROUND BRUSH  
Ø36 mm

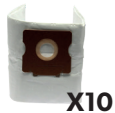


CODE: MPVR00141  
SMALL TOOL  
Ø36 mm



## OPTIONAL ACCESSORIES

CODE: KTRI05997  
MICROFIBER BAG SET OF  
10 PCS



CODICE: KTRI02716  
PAPER BAG SET OF  
10 PCS



CODE: FTDP00506  
HEPA H13 CARTRIDGE  
DOWNSTREAM 860 cm<sup>2</sup>



CODICE: FTDP00604  
HEPA H14 CARTRIDGE  
UPSTREAM 2.385 cm<sup>2</sup>



CODICE: MPVR10281  
TOOL HOLDER



CODE: MPVR06274  
CHROMED TELESCOPIC  
TUBE Ø36 mm



CODICE: SPPV02588  
TURBOBRUSH  
Ø36 mm



CODE: SPPV01771  
SLIDING DOUBLE USE  
BRUSH Ø36 mm



# HD 1/13 ECO

POWER MAX

870  
W

WATER LIFT

2420  
mmH<sub>2</sub>O

AIRFLOW

183  
m<sup>3</sup>/h

TANK CAPACITY

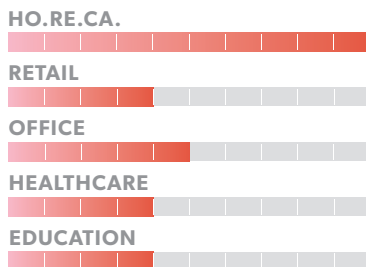
13  
l



## EXCLUSIVE FEATURES

- ▶ SANIFILTER
- ▶ STRONG HOOKS
- ▶ SCREWING CONNECTION
- ▶ ECOMOTOR
- ▶ ECOBRUSH
- ▶ SPEED&NOISE REGULATOR
- ▶ DETACHABLE CABLE
- ▶ BAG FILTER INCLUDED

## MOST FREQUENTLY USE



## INNOVATIONS



## SPECS



DETACHABLE CABLE



SPEED REGULATOR TO DECREASE THE NOISE LEVEL



PARKING POSITION

## TECHNICAL DATA

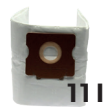
		<b>HD 1/13 ECO</b>
Code		ASD014076
PERFORMANCE		
Usage		DRY
Motor		1
Power	W	770-870 max
Voltage	V	220-240
Water lift	mmHzO	2420
Airflow	m <sup>3</sup> /h	183
Tank Capacity/Material	l	13 / plastic
Cable length	m	12.5
Sound Pressure Level (EN 60704-1; EN 60704-2-1; IEC 60335-2-69)	dB(A)	62 (down to 55)
Sound Pressure Level (EN 60704-1; EN 60704-2-1; Reg. 665/2013, 666/2013)	dB(A)	77 (down to 68)
Diameter of accessories	mm	36
Dimensions (LxWxH)	mm	380x380x500
Weight	kg	8.0

## STANDARD EQUIPMENT: HD 1/13 ECO

CODE: KTRI03023  
FILTERING KIT



CODE:  
MICROFIBER BAG 11 I



CODE: TBFX00704  
FLEXIBLE HOSE 2 m  
Ø36 mm



CODE: LAFN85073  
HANDLE WITH AIR  
REGULATOR  
Ø36 mm



CODE: LAFN06340 (FOR 1 PC)  
CHROMED TUBE 50 CM  
Ø36 mm  
(MACHINE COMES WITH 2PCS)



CODE: SPPV01990  
DOUBLE USE BRUSH ECO  
Ø36 mm



CODE: SPPV28242  
FLAT LANCE  
Ø36 mm



CODE: SPPV28243  
ROUND BRUSH  
Ø36 mm

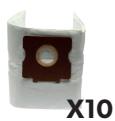


CODE: MPVR00141  
SMALL TOOL  
Ø36 mm



## OPTIONAL ACCESSORIES

CODE: KTRI04744  
MICROFIBER BAG SET OF  
10 PCS



CODICE: KTRI02639  
PAPER BAG SET OF  
10 PCS



CODE: MPVR06274  
CHROMED TELESCOPIC  
TUBE Ø36 mm



CODICE: SPPV02588  
TURBOBRUSH  
Ø36 mm



CODICE: SPPV01771  
SLIDING DOUBLE USE  
BRUSH Ø36 mm









## HIGHEST PERFORMANCE DOUBLE STAGE MOTORS

---

### RELIABLE AND DURABLE

IPC Premium Wet & Dry vacuum cleaners are equipped with the best double stage motors of the market, for higher reliability, also in heavy duty applications, and intensive use with overall longer lifespan.

# GREATEST PERFORMANCES

## MAXIMUM RELIABILITY & DURABILITY



---

### BENEFITS

- 01 Motor designed with double fan in series, to achieve higher waterlift value up to 2470 mmH<sub>2</sub>O
- 02 The most known and used by-pass motor of the market with proven excellent results
- 03 Extremely high-performance motor throughout its working life, up to 800 hours



#### INDEPENDENT MOTORS



### ALWAYS PERFORMANT

2 motors and 3 motors equipped machines have special valves allowing the separate start of the motors without any power loss. This function allows the operator to adjust the power according to the specific use and have a spare motor. Light indicators show how many motors are running and alert if there is any breakdown of the power cord.

#### BENEFITS

01

Power selection according to usage

02

Possibility to have a ready-to-use spare motor



#### SEALANT FLOATER & INTEGRATED ANTIFOAM SYSTEM



### FOAM & LIQUIDS STOP

Wet & Dry vacuum cleaners are equipped with a special device - the Integrated Anti-Foam System - which protects the floater from foam. The floater detects and blocks liquids when tank is full; thanks to its watertight rubber seal, this innovative system protects the motor ensuring maximum safety.

#### BENEFITS

01

The Integrated Anti-Foam System guarantees the correct floater operation mode

02

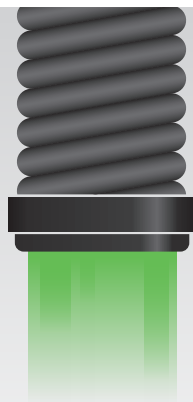
The floater detects and blocks liquids when tank is full

03

The motor is protected by the floater



#### DRAIN HOSE



### EASY EMPTYING OF THE TANK

Wet & Dry vacuum cleaners with large capacity are equipped with drain valve device to facilitate tank emptying.

#### BENEFITS

01

Possibility to empty the tank from liquids

02

User-friendly design



TIPPING  
TROLLEY



---

### EVEN FASTER TO EMPTY THE TANK

Wet & Dry vacuum cleaners with large capacity are equipped with tipping tank system and a front handle to make emptying operations even more easy and fast.

---

#### BENEFITS

01

Ideal for large quantities of liquids

02

Designed for working efficiently and in total safety



DFS HEPA  
DUAL  
FILTRATION  
SYSTEM



---

### ONLY ONE WET & DRY HEPA FILTERING SYSTEM

The special upstream filter cartridge, made of wet resistant polyester layer and HEPA H14 efficiency filtering media, stops solid particles that could escape during liquid collection.

---

#### BENEFITS

01

DFS is practical and useful system: no need to remove the filter during liquids suction

02

DFS is versatile: you can vacuum both dust and liquids

03

HEPA H14 filtering media stops fine particles or aerosol to protect motors, operators and environment.



---

## DAILY CLEANING

- ▶ KITCHENS CLEANING
- ▶ FLOORS DRYING AFTER WASHING WITH SINGLE BRUSH SWEEPERS
- ▶ BATHROOM FIXTURE AND TOILETS

---

## GENERAL MAINTENANCE

- ▶ CAR PARKS
- ▶ HALLS
- ▶ COFFEE SHOPS AND DINING ROOMS

# HARDWARE & COMMUNITIES



---

## GENERAL MAINTENANCE

- ▶ CAR WASH
- ▶ POOLSIDE AND SPA CLEANING
- ▶ GARAGE AND WORKING AREAS

---

## REGULAR CLEANING

- ▶ LOADING&UNLOADING AREAS
- ▶ TRUCK CARGO BEDS
- ▶ FOUNTAINS

# AGRICULTURE



---

## GENERAL MAINTENANCE

- ▶ CLEANING OF MECHANICAL VEHICLES AND TANKS
- ▶ REMOVAL FROM SEWER DRAINAGE AREAS
- ▶ RECOVERY OF ACCIDENTAL SPILLINGS

## REGULAR CLEANING

- ▶ REMOVAL OF PLANTS LEAKS
- ▶ VANS AND TRACTORS CLEANING
- ▶ LIQUIDS REMOVAL AFTER MACHINERIES WASHING

# INDUSTRY



---

## GENERAL MAINTENANCE

- ▶ CLEANING OF MECHANICAL VEHICLES AND TANKS
- ▶ REMOVAL FROM SEWER DRAINAGE AREAS
- ▶ RECOVERY OF ACCIDENTAL SPILLINGS

## REGULAR CLEANING

- ▶ REMOVAL OF PLANTS LEAKS
- ▶ VANS AND TRACTORS CLEANING
- ▶ LIQUIDS REMOVAL AFTER MACHINERIES WASHING

# HWD 1/16

POWER MAX

1200  
W

WATER LIFT

2470  
mmH<sub>2</sub>O

AIRFLOW

210  
m<sup>3</sup>/h

TANK CAPACITY

16  
l



## EXCLUSIVE FEATURES

- ▶ SANIFILTER
- ▶ STRONG HOOKS
- ▶ SCREWING CONNECTION
- ▶ SEALANT FLOATER & INTEGRATED ANTIFOAM SYSTEM
- ▶ DOUBLE STAGE MOTOR
- ▶ AP TUBE
- ▶ HIGH RESISTANT FLEXIBLE HOSE
- ▶ 4 SWIVELLING WHEELS FOR AN EASY HANDLING

## INNOVATIONS

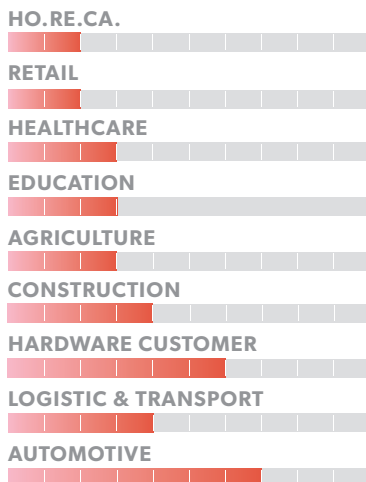


BLACK IS GREEN™



HIGHEST PERFORMANCE DOUBLE STAGE MOTORS

## MOST FREQUENTLY USE



## SPECS



ERGONOMIC HANDLE AND CABLE HOOK



INTEGRATED ANTI-FOAM SYSTEM



AP TUBES ARE LIGHTWEIGHT AND EXTREMELY ROBUST



INNOVATIVE HEAD GASKET



EXTREMELY FLEXIBLE HOOKS



TROLLEY WITH SWIVELLING WHEELS

## TECHNICAL DATA

		<b>HWD 1/16</b>
Code		ASD014077
PERFORMANCE		
Usage		WET & DRY
Motor		1 - double stage
Power	W	1000-1200 max
Voltage	V	220-240
Water lift	mmHzO	2470
Airflow	m <sup>3</sup> /h	210
Tank Capacity/Material	l	16 / plastic
Cable length	m	12
Sound Pressure Level (EN 60704-1; EN 60704-2-1; IEC 60335-2-69)	dB(A)	72
Diameter of accessories	mm	36
Dimensions (LxWxH)	mm	360x360x500
Weight	kg	9.0

## STANDARD EQUIPMENT

CODE: KTRI02133  
DRY FILTERING KIT



CODE: TBFX01183  
FLEXIBLE HOSE L. 2 m  
Ø36 mm



CODE: LAFN85073  
HANDLE WITH AIR  
REGULATOR Ø36 mm



CODE: LAFN28238 (FOR 1 PC)  
ALUMINIUM/PLASTIC  
TUBE 50 CM Ø36 mm  
(MACHINE COMES WITH 2PCS)



CODE: SPPV28244  
DOUBLE USE BRUSH  
Ø36 mm



CODE: SPPV28245  
WET FLOOR TOOL  
Ø36 mm



CODE: SPPV28243  
ROUND BRUSH  
Ø36 mm



CODE: MPVR00141  
SMALL TOOL  
Ø36 mm



## OPTIONAL ACCESSORIES

CODE: KTRI02639  
PAPER BAG SET OF 10 PCS



CODICE: KTRI04794  
MICROFIBER BAG CLASS M  
SET OF 10 PCS (10 PZ)



CODE: FTDP00222  
PREFILTER PCB



CODE: MPVR11566  
CREVICE TOOL 35 cm  
Ø36 mm



CODE: MPVR11567  
FLEXIBLE CREVICE TOOL  
60 cm Ø36 mm



CODE: MPVR06274  
CHROMED TELESCOPIC  
TUBE Ø36 mm



CODE: SPPV02588  
TURBOBRUSH Ø36 mm



CODE: SPPV01771  
SLIDING DOUBLE USE  
BRUSH 36 mm



# HWD 1/27

POWER MAX

1200  
W

WATER LIFT

2470  
mmH<sub>2</sub>O

AIRFLOW

210  
m<sup>3</sup>/h

TANK CAPACITY

27  
l



## EXCLUSIVE FEATURES

- ▶ SANIFILTER
- ▶ STRONG HOOKS
- ▶ SCREWING CONNECTION
- ▶ SEALANT FLOATER & INTEGRATED ANTIFOAM SYSTEM
- ▶ DOUBLE STAGE MOTOR
- ▶ AP TUBE
- ▶ HIGH RESISTANT FLEXIBLE HOSE
- ▶ 4 SWIVELLING WHEELS FOR AN EASY HANDLING

## INNOVATIONS

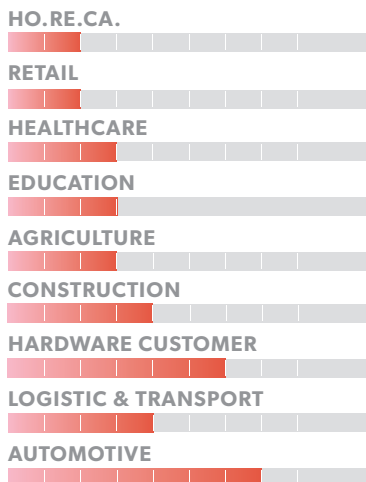


BLACK IS GREEN™



HIGHEST PERFORMANCE DOUBLE STAGE MOTORS

## MOST FREQUENTLY USE



## SPECS



ERGONOMIC HANDLE AND CABLE HOOK



INTEGRATED ANTI-FOAM SYSTEM



AP TUBES ARE LIGHTWEIGHT AND EXTREMELY ROBUST



INNOVATIVE HEAD GASKET



EXTREMELY FLEXIBLE HOOKS



TROLLEY WITH SWIVELLING WHEELS



## TECHNICAL DATA

		<b>HWD 1/27</b>
Code		ASD014078
<b>PERFORMANCE</b>		
Usage		WET & DRY
Motor		1 - double stage
Power	W	1000-1200 max
Voltage	V	220-240
Water lift	mmHzO	2470
Airflow	m <sup>3</sup> /h	210
Tank Capacity/Material	l	27 / plastic
Cable length	m	12
Sound Pressure Level (EN 60704-1; EN 60704-2-1; IEC 60335-2-69)	dB(A)	72
Diameter of accessories	mm	38
Dimensions (LxWxH)	mm	360x360x650
Weight	kg	10.0

## STANDARD EQUIPMENT

CODE: KTRI02943  
DRY FILTERING KIT



CODE: TBFX01166  
FLEXIBLE HOSE 2.5 M  
Ø38 mm



CODE: MPVR43047  
HANDLE WITH AIR  
REGULATOR Ø38 mm



CODE: LAFN43048 (FOR 1 PC)  
ALUMINIUM/PLASTIC  
TUBES 2X50 cm Ø38 mm  
(MACHINE COMES WITH 2PCS)



CODE: SPPV43050  
DUST TOOL  
Ø38 mm



CODE: SPPV43051  
WET TOOL Ø38 mm



CODE: SPPV00156  
FLAT LANCE Ø38 mm



CODE: SPPV43052  
ROUND BRUSH Ø38 mm



CODE: MPVR43049  
ADAPTER

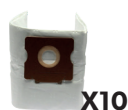


## OPTIONAL ACCESSORIES

CODE: KTRI03035  
PAPER BAG SET OF 10 PCS



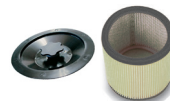
CODE: KTRI04795  
MICROFIBER BAG SET OF  
10 PCS



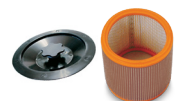
CODE: FTDP00222  
PREFILTER PCB



CODE: FTDP00654  
WASHABLE CARTRIDGE  
KIT W/RING AND GASKET



CODE: FTDP00657  
HEPA CARTRIDGE KIT W/  
RING AND GASKET



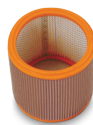
CODE: MPVR28723  
FASTENING PLASTIC RING



CODE: FTDP44260  
WASHABLE POLYESTER  
CARTRIDGE (AVAILABLE  
AS SPARE PART) 3.000 cm<sup>2</sup>



CODE: FTDP28844  
HEPA H13 CARTRIDGE  
(AVAILABLE AS SPARE PART)  
3.000 cm<sup>2</sup>



CODE: FTDP28755  
MESH FILTER



CODE: KTRI03005  
FILTERING KIT SUITABLE  
FOR CARTRIDGE



# HWD 2/62

POWER MAX

2400  
W

WATER LIFT

2470  
mmH<sub>2</sub>O

AIRFLOW

420  
m<sup>3</sup>/h

TANK CAPACITY

62  
l

## EXCLUSIVE FEATURES

- ▶ SANIFILTER
- ▶ STRONG HOOKS
- ▶ SCREWING CONNECTION
- ▶ SEALANT FLOATER & INTEGRATED ANTIFOAM SYSTEM
- ▶ INDEPENDENT MOTORS WITH LIGHT SWITCHES
- ▶ DOUBLE STAGE MOTORS
- ▶ AP TUBE
- ▶ HIGH RESISTANT FLEXIBLE HOSE
- ▶ DETACHABLE TANK AND SOLID CART
- ▶ TIPPING TROLLEY



## INNOVATIONS



BLACK IS GREEN™



HIGHEST PERFORMANCE DOUBLE STAGE MOTORS

## MOST FREQUENTLY USE

AGRICULTURE



CONSTRUCTION



HEAVY INDUSTRY



LOGISTIC & TRANSPORT



HARDWARE CUSTOMER



AUTOMOTIVE



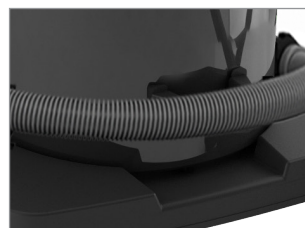
TIPPING TANK



TROLLEY WITH HANDLE



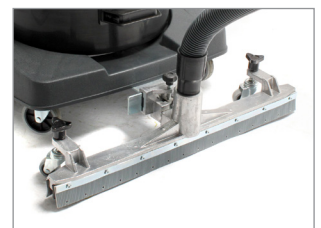
LIGHT SWITCHES



DRAIN HOSE



ANTI-FOAM SYSTEM



OPTIONAL FIXED ACCESSORY

## TECHNICAL DATA

Code	<b>HWD 2/62</b>	
PERFORMANCE	ASD014079	
Usage	WET & DRY	
Motor	2 - double stage	
Power	W	2000-2400 max
Voltage	V	220-240
Water lift	mmHzO	2470
Airflow	m <sup>3</sup> /h	420
Tank Capacity/Material	l	62 / plastic
Cable length	m	12
Sound Pressure Level (EN 60704-1; EN 60704-2-1; IEC 60335-2-69)	dB(A)	74
Diameter of accessories	mm	38
Dimensions (LxWxH)	mm	550x600x1030
Weight	kg	21.0

## STANDARD EQUIPMENT

CODE: FTDP28733  
DRY FILTERING KIT



CODE: TBFX01166  
FLEXIBLE HOSE 2.5 M  
Ø38 mm



CODE: MPVR43047  
HANDLE WITH AIR  
REGULATOR Ø38 mm



CODE: LAFN43048 (FOR 1 PC)  
ALUMINIUM/PLASTIC  
TUBES 2X50 cm Ø38 mm  
(MACHINE COMES WITH 2PCS)



CODE: SPPV43050  
DUST TOOL  
Ø38 mm



CODE: SPPV43051  
WET TOOL Ø38 mm



CODE: SPPV00156  
FLAT LANCE Ø38 mm



CODE: SPPV43052  
ROUND BRUSH Ø38 mm



CODE: MPVR43049  
ADAPTER



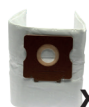
## OPTIONAL ACCESSORIES

CODE: KTRI02912  
PAPER BAG SET OF 10 PCS



X10

CODE: KTRI04796  
MICROFIBER BAG SET OF  
10 PCS

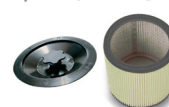


X10

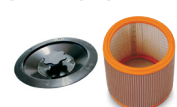
CODE: FTDP00223  
PREFILTER PCB



CODE: FTDP00654  
WASHABLE CARTRIDGE  
KIT W/RING AND GASKET



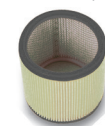
CODE: FTDP00657  
HEPA CARTRIDGE KIT W/  
RING AND GASKET



CODE: MPVR28723  
FASTENING PLASTIC RING



CODE: FTDP44260  
WASHABLE POLYESTER  
CARTRIDGE (AVAILABLE  
AS SPARE PART) 3.000 cm<sup>2</sup>



CODE: FTDP28844  
HEPA H13 CARTRIDGE  
(AVAILABLE AS SPARE PART)  
3.000 cm<sup>2</sup>



CODE: FTDP28755  
MESH FILTER



CODE: SPPV01336  
CARPET BRUSH  
Ø38 mm



CODE: SPPV28248  
FIXED ACCESSORY FOR  
LIQUID



CODE: SPPV28247  
FIXED ACCESSORY FOR  
DUST



CODE: SPPV30894  
FIXED ACCESSORY FOR  
DUST AND LIQUIDS



CODE: KTRI06274  
3D WET FILTERING KIT FOR  
MIXTURES



CODE: KTRI06214  
DFS HEPA H14 KIT



# HWD 3/78

POWER MAX

3300  
W

WATER LIFT

2470  
mmH<sub>2</sub>O

AIRFLOW

630  
m<sup>3</sup>/h

TANK CAPACITY

78  
l



## EXCLUSIVE FEATURES

- ▶ SANIFILTER
- ▶ STRONG HOOKS
- ▶ SCREWING CONNECTION
- ▶ SEALANT FLOATER & INTEGRATED ANTIFOAM SYSTEM
- ▶ INDEPENDENT MOTORS WITH LIGHT SWITCHES
- ▶ DOUBLE STAGE MOTOR
- ▶ AP TUBE
- ▶ HIGH RESISTANT FLEXIBLE HOSE
- ▶ DETACHABLE TANK AND SOLID CART
- ▶ TIPPING TROLLEY

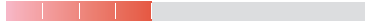
## INNOVATIONS



HIGHEST PERFORMANCE  
DOUBLE STAGE  
MOTORS

## MOST FREQUENTLY USE

AGRICULTURE



CONSTRUCTION



HEAVY INDUSTRY



LOGISTIC & TRANSPORT



HARDWARE CUSTOMER



AUTOMOTIVE



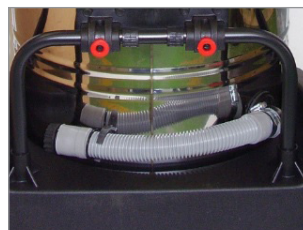
TIPPING TANK



TROLLEY WITH HANDLE



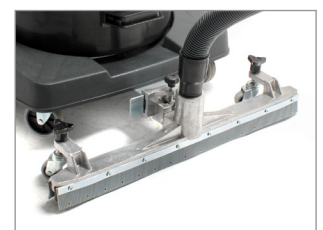
LIGHT SWITCHES



DRAIN HOSE



ANTI-FOAM SYSTEM



OPTIONAL FIXED ACCESSORY

## TECHNICAL DATA

Code	<b>HWD 3/78</b>	
PERFORMANCE	ASD014080	
Usage	WET & DRY	
Motor	3 - double stage	
Power	W	2900-3300 max
Voltage	V	220-240
Water lift	mmHzO	2470
Airflow	m <sup>3</sup> /h	630
Tank Capacity/Material	l	78 / steel
Cable length	m	12
Sound Pressure Level (EN 60704-1; EN 60704-2-1; IEC 60335-2-69)	dB(A)	76
Diameter of accessories	mm	38
Dimensions (LxWxH)	mm	550x600x980
Weight	kg	24.0

## STANDARD EQUIPMENT

CODE: KTRI02949  
DRY FILTERING KIT



CODE: TBFX01166  
FLEXIBLE HOSE 2.5 M  
Ø38 mm



CODE: MPVR43047  
HANDLE WITH AIR  
REGULATOR Ø38 mm



CODE: LAFN43048 (FOR 1 PC)  
ALUMINIUM/PLASTIC  
TUBES 2X50 cm Ø38 mm  
(MACHINE COMES WITH 2PCS)



CODE: SPPV43050  
DUST TOOL  
Ø38 mm



CODE: SPPV43051  
WET TOOL Ø38 mm



CODE: SPPV00156  
FLAT LANCE Ø38 mm



CODE: SPPV43052  
ROUND BRUSH Ø38 MM



CODE: MPVR43049  
ADAPTER



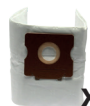
## OPTIONAL ACCESSORIES

CODE: KTRI02912  
PAPER BAG SET OF 10 PCS



X10

CODE: KTRI04796  
MICROFIBER BAG SET OF  
10 PCS

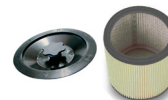


X10

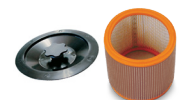
CODE: FTDP00223  
PREFILTER PCB



CODE: FTDP00654  
WASHABLE CARTRIDGE  
KIT W/RING AND GASKET



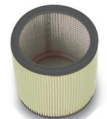
CODE: FTDP00657  
HEPA CARTRIDGE KIT W/  
RING AND GASKET



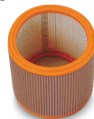
CODE: MPVR28723  
FASTENING PLASTIC  
RING



CODE: FTDP44260  
WASHABLE POLYESTER  
CARTRIDGE (AVAILABLE  
AS SPARE PART) 3.000 cm<sup>2</sup>



CODE: FTDP28844  
HEPA H13 CARTRIDGE  
(AVAILABLE AS SPARE PART)  
3.000 cm<sup>2</sup>



CODE: FTDP28755  
MESH FILTER



CODE: SPPV01336  
CARPET BRUSH  
Ø38 mm



CODE: SPPV28248  
FIXED ACCESSORY FOR  
LIQUID



CODE: SPPV28247  
FIXED ACCESSORY FOR  
DUST



CODE: SPPV30894  
FIXED ACCESSORY FOR  
DUST AND LIQUIDS



CODE: KTRI06275  
DFS HEPA H14 KIT



CODE: KTRI02735  
FIXED ACCESSORY FOR  
LIQUID



CODE: SPPV37133  
FIXED ACCESSORY FOR  
DUST



## **Ip Cleaning Srl**

Viale Treviso 63 - 30026 Summaga di Portogruaro (VE) - Italy

Tel. +39 0421 205511 - Fax +39 0421 204227

[info@ipcworldwide.com](mailto:info@ipcworldwide.com) - [www.ipcworldwide.com](http://www.ipcworldwide.com)

